



Cardiff and Vale of Glamorgan

Integrated Health and Social Care Newsletter October 2016

Welcome to the first edition of our quarterly newsletter for the Integrated Health and Social Care Partnership in Cardiff and the Vale of Glamorgan! The newsletter aims to update you on the partnership working taking place to improve the health and well-being of citizens throughout our region, by developing integrated services and ensuring effective care and support is in place for our residents.

Our work is governed by the **Regional Partnership Board** which brings together representatives from Cardiff and Vale University Health Board, Cardiff City Council, Vale of Glamorgan Council, Welsh Ambulance Service Trust, Carers, the third sector and independent service providers throughout our region. Together we aim to improve outcomes for citizens ensuring that, wherever possible, people in our community:

- stay healthy and are able to prevent ill health in the community;
- have control of their own care and remain independent;
- receive safe, seamless care in response to individual need.

This is a challenging and exciting agenda and we look forward to updating you on our progress.

Cllr Susan Elsmore, Cabinet Member for Health, Housing and Wellbeing, City of Cardiff Council and Chair of the Regional Partnership Board.



Our region

Within Cardiff and Vale of Glamorgan we have three Localities: **Cardiff North and West**, **Cardiff South and East**, and the **Vale of Glamorgan**. Each Locality has three Primary Care/GP clusters. Local authorities and partners work within Neighbourhoods which are geographically the same as clusters.



Cardiff and Vale of Glamorgan Locality and Neighbourhood Structure

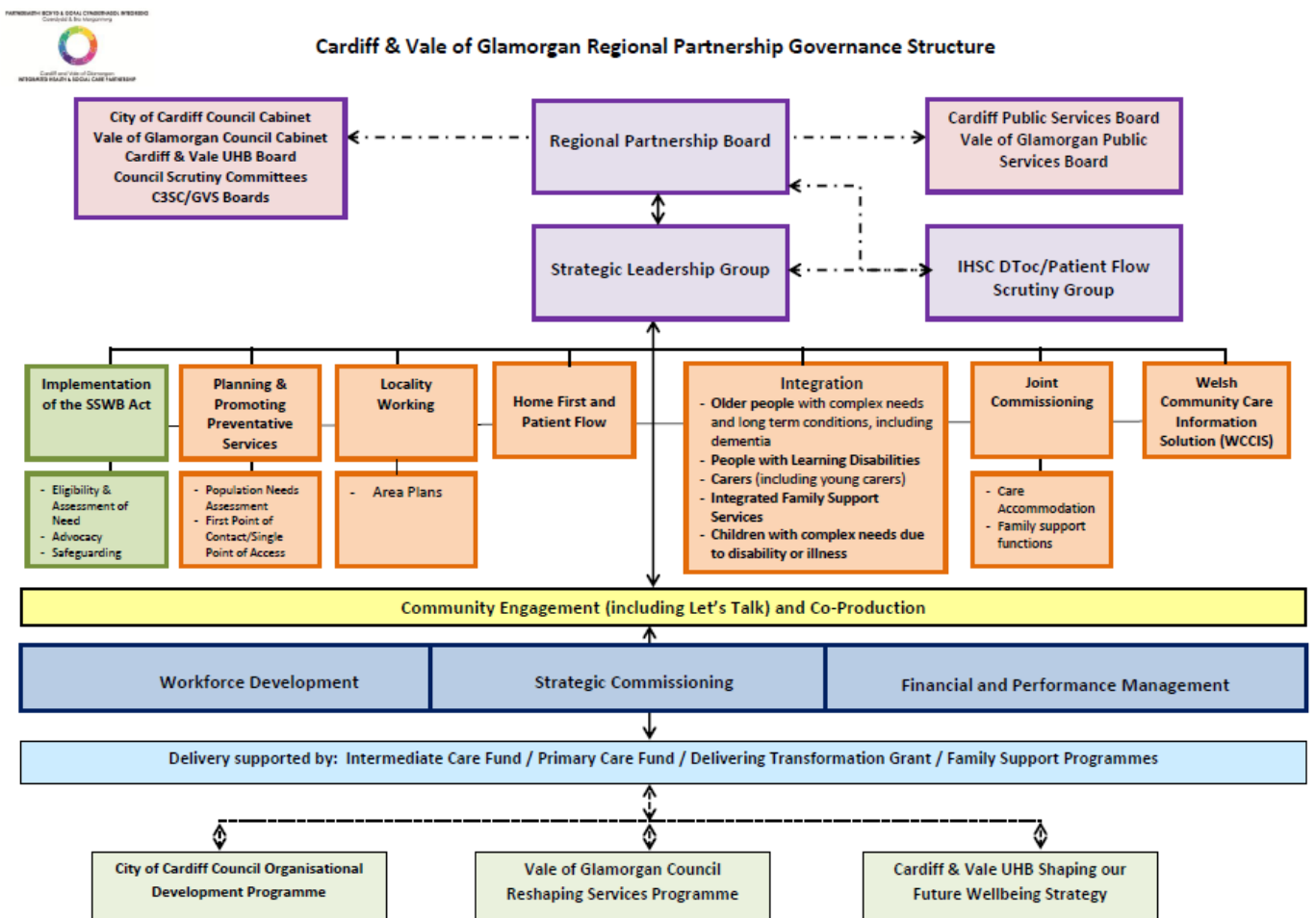
| | |
|---|---|
| Inside this Issue: | |
| IHSC Governance Structure | 2 |
| Social Services and Well-being (Wales) Act | 3 |
| Intermediate Care Fund | 4 |
| Joint Commissioning | 5 |
| Locality Working | 5 |
| Patient Flow: Home First | 5 |
| Welsh Community Care Information Solution | 5 |
| Other News and IHSC contacts | 6 |



IHSC Governance Structure

Our Partnership is structured to deliver various workstreams which together help to bring about the integration of key services across Cardiff and the Vale of Glamorgan. The **Regional Partnership Board** oversees the activities of all the partners involved and is supported by the **Strategic Leadership Group (SLG)** to ensure delivery.

The **SLG** comprises senior leaders from the UHB, Cardiff Council, Vale of Glamorgan Council, and third sector partners who ensure that the strategy set out by the Regional Partnership Board is translated into action across the Partnership.



September 2016

Together, we will:

- ◆ Gain a better understanding of local needs and resources;
- ◆ Encourage service providers to work better together to develop integrated experiences for citizens;
- ◆ Work with communities to develop local solutions to improve the lives of residents;
- ◆ Align resources (financial and people) to focus on population outcomes which span service and organisational boundaries





Getting in on the Act

#GetTheAct
 www.ccwales.org.uk



Social Services and Well-being (Wales) Act

This Act came into force on 6 April this year and is set to transform the way that health and services are delivered in Wales.

It seeks to enhance the well-being of people who use our services and gives individuals more influence over how they receive care. In particular it aims to provide care and services as close to home as possible and gives powers to ensure that partners use their resources effectively and reduce duplication.

Want to learn more? Go to:

<http://www.ccwales.org.uk/getting-in-on-the-act-hub/>

Care Council Wales has developed a range of resources to support training and awareness of the Act and what it will mean for citizens and staff. Information modules include:



Introduction to the Social Services and Well-being (Wales) Act 2014

- Overview of the Act, its principles and intentions.
- How it relates to other legislation



Part 9: Co-operation and Partnership

- What's required by the Act
- Roles and responsibilities



Governance Arrangements

- Good practice governance
- Effective decision making



Strategic Transformation

- Key themes of the transformation agenda
- Tools for transformation
- The Leadership Task

**let's talk
 amser siarad**

www.cardiffandvaleuhb.wales.nhs.uk/lets-talk
 or call: 029 2087 3443

Let's Talk is gathering feedback on what services, advice and support are helpful in promoting people's health and well-being and maintaining independence in order to inform the region's Population Needs Assessment.

Information you provide will help us to better understand any gaps in existing services, advice and support; and anything which people have found helpful in slowing or preventing problems. We also want to understand which groups and places in communities help people with their health, well-being and maintaining independence.

Please encourage everyone living in Cardiff and the Vale of Glamorgan to complete the survey. A new organisational stakeholder survey will also be available shortly at the same website!



Intermediate Care Fund

The Intermediate Care Fund (ICF) is fundamental in securing the integration of key services across our community to ensure that we offer an effective service to our citizens throughout Cardiff and the Vale of Glamorgan. It **aims** to:

- Reduce unscheduled admissions to hospital;
- Provide solutions for accelerated discharge from hospital;
- Support the delivery of an information, advice and assistance service;
- Develop preventative services and trial new models of working such as social enterprises and third sector brokerage;
- Provide solutions for reablement of service users to independence;
- Support integrated health and social care services;
- Delivery prudent health and social care.

This year, the ICF is funding the following **revenue workstreams**:

- ◆ **Preventative interventions** to promote independence at home through financial and practical advice and support;
- ◆ **Single point of access/First point of contact** a single point of contact to community health, social services and housing;
- ◆ **Accommodation solutions** with step down housing and support;
- ◆ **Discharge to Assess** – a suite of services providing domiciliary and residential options for patients who require further assessment and rehabilitation but do not require to be in an acute hospital bed. This is due to come on line from end of October 2016.
- ◆ **Enhanced Integrated Discharge Team** provision across the University Hospital of Wales and University Hospital Llandough;
- ◆ Integrated services for people with **Learning Disabilities and Children with Complex Needs**;
- ◆ Integrated services for people with **autism**.

In addition, **capital funding** has also been approved to provide support for delivery of the following:

- ◆ **Monitoring devices** to enable enhanced independence at home;
- ◆ Additional **step down flats**;
- ◆ **Respite provision** for people with learning disabilities and children with complex needs;
- ◆ **Improvements to Day Centres** for respite and preventative service provision;
- ◆ Provision for the **co-location of the Mental Health Community Crisis Team (REACT)**;
- ◆ Support for the delivery of an **Acute Assessment Unit at UHW**;
- ◆ Expansion of **CRT accommodation**.

For further information please contact Meredith.gardiner2@wales.nhs.uk

“The additional income is a great help and assists in paying towards the telecare service. We wouldn’t have known about the services discussed if the Visiting Officer hadn’t advised us about them. We also feel we know where to come should we need anything further.”

Client Feedback to the Accommodation Solutions Team



Example of property improvement by Care and Repair via Accommodation Solutions.

“Since you have been helping me I now have enough money to buy the things I need, such as double-handed cups and adapted cutlery. I can also afford a cleaner to do the things I cannot myself: I am so happy about this.”

Visually impaired client with rheumatoid arthritis after using the Preventative Interventions Project



Joint Commissioning

Following a Partnership workshop in May 2016, a new Joint Commissioning Project Board has been established to meet the SSWB Act requirement of established pooled funds for care accommodation by 2018.

Data collation across the region has commenced to inform the baseline, including participation in a National “Day of Care Home” Audit which took place on 1st August. For further information, please contact

Rachel.Jones41@wales.nhs.uk

Locality Working



The Regional Partnership Board workshop took place in July to consider how we improve service provision and make it more local to the people who need our services. We will be working with citizens, local communities, organisations and partners to shape and deliver local services which meet the needs of different areas. Our aims are for people in Cardiff and Vale of Glamorgan to have improved health and well-being and for health inequalities to be reduced. For further information, please contact Rachel.Jones41@wales.nhs.uk

Patient Flow: Home First



The Partnership is pleased to welcome Judith Hill as the new Head of Integrated Care working across the region. As part of her role, Judith will be working with partners to update and implement the next phase of our Home First Plan to reduce Delayed Transfers of Care. Judith's focus will be upon developing services to expedite the progress of citizens using our acute and/or long term care services and, where possible, to reduce the number of people who require those services. Judith can be contacted at:

Judith.a.hill@wales.nhs.uk

Welsh Community Care Information Solution (WCCIS)



This new information system is under development to enable all Health Boards and Councils in Wales to share information about patients or clients. Eventually, the information system will replace the community information systems used by individual organisations, such as PARIS, Swift and CareFirst.

This will enable the development of a single record, regardless of which organisation the staff work for. There has been consultation across Wales about what is required and it has been decided to use “CareDirector” as it has the functionality necessary to support community health, mental health and social care services.

It is planned that the system will be implemented across Cardiff and the Vale of Glamorgan in the Autumn of 2017. **For more information contact:**

Bryn.Harries@wales.nhs.uk



OTHER NEWS



Dewis Cymru
Have choice and take control

After two successful publicity events in Cardiff and the Vale of Glamorgan, DEWIS will be updating its data banks with information on many more local services which will be of use to citizens and staff. Why not take a look on <https://www.dewis.wales>.

The Kings Fund

Can social care survive the breadline? This King's Fund event discussed the pressures facing social care services and the resulting impact on the NHS. A new report was launched investigating the effect of public spending reductions on social care services over the last five years:
<http://www.kingsfund.org.uk/events/can-social-care-survive-breadline>



Welsh Government: Taking Wales Forward 2016-2021 Welsh Government has just announced its programme of work for the next 5 years. See here for more details:
<http://gov.wales/docs/strategies/160920-taking-wales-forward-en.pdf>

IHSC on the Move: a new base for the Team at Cardiff Royal Infirmary



The IHSC team has now moved to its new base on the 2nd Floor above the main entrance at Cardiff Royal Infirmary.

The new accommodation will provide space for the team along with a meeting room for 10 people and hot desk facilities for partners to use.

Contact the IHSC Team:

- ◆ **Rachel Jones:** Assistant Director, Integrating Health and Social Care. Rachel.Jones41@wales.nhs.uk. Tel: 029 2033 5444
- ◆ **Meredith Gardiner:** Programme Manager for Health, Social Care and Well-being. Meredith.Gardiner2@wales.nhs.uk Tel: 029 2033 5975
- ◆ **Rachel Armitage:** Partnership Support Officer. Rachel.Armitage@wales.nhs.uk Tel: 029 2033 5071

GET
— IN —
TOUCH



www.cardiffandvaleuhb.wales.nhs.uk/integrated-health-and-social-care



[@cv_ihscpsip](https://twitter.com/cv_ihscpsip)



hscintegration@wales.nhs.uk